

us stazione



Settimo San Pietro

SP15

SP93

SS125

SS554

SS554

SS125

SP15

SP95

Quartucciu

Quartu Sant'Elena

A

COMUNE DI QUARTUCCIU

COMMITTENTE
ENERGYQIBESS
via Simplicio Spano n.11 - Olbia (SS)

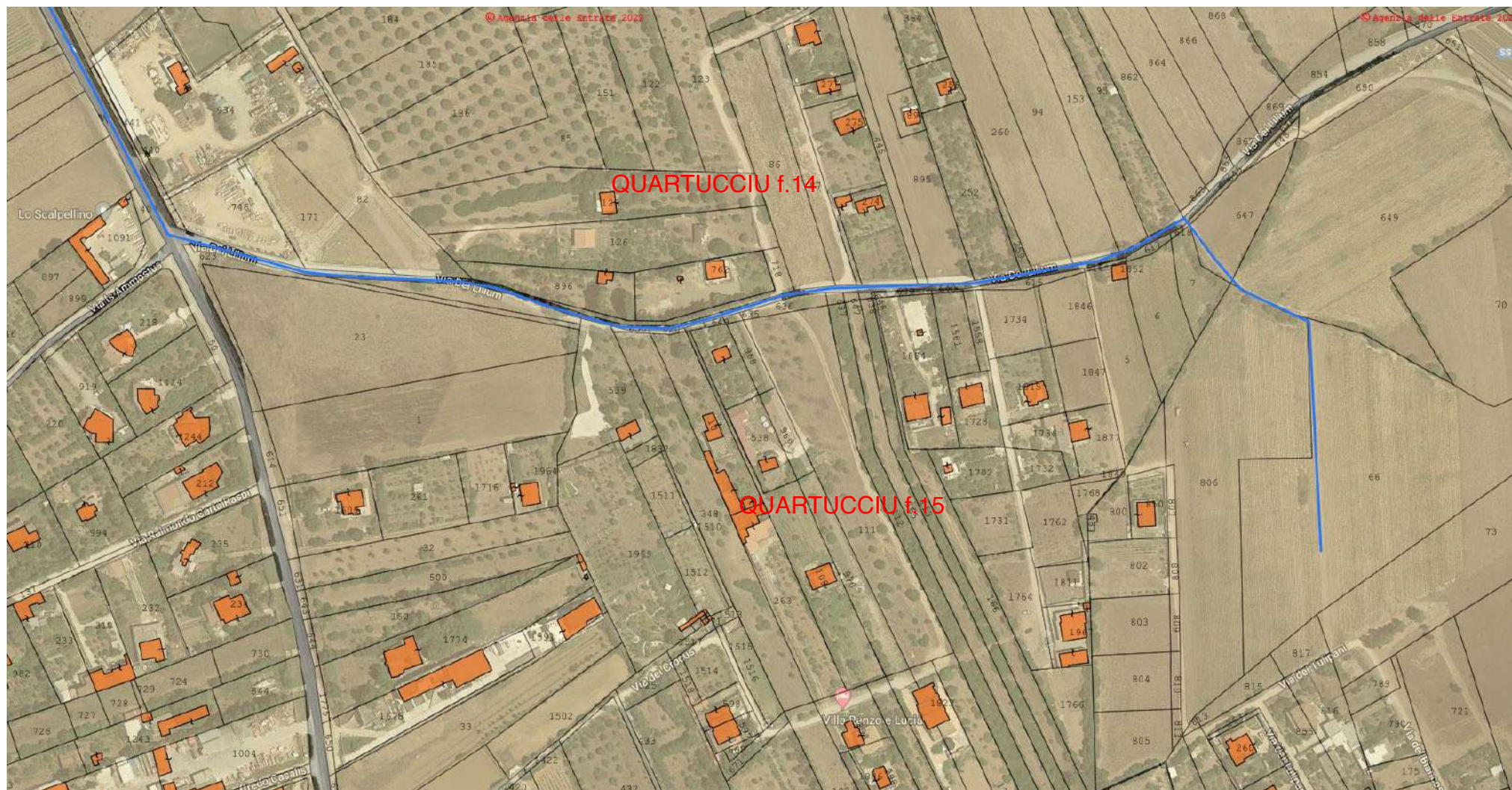
PROGETTO PRELIMINARE

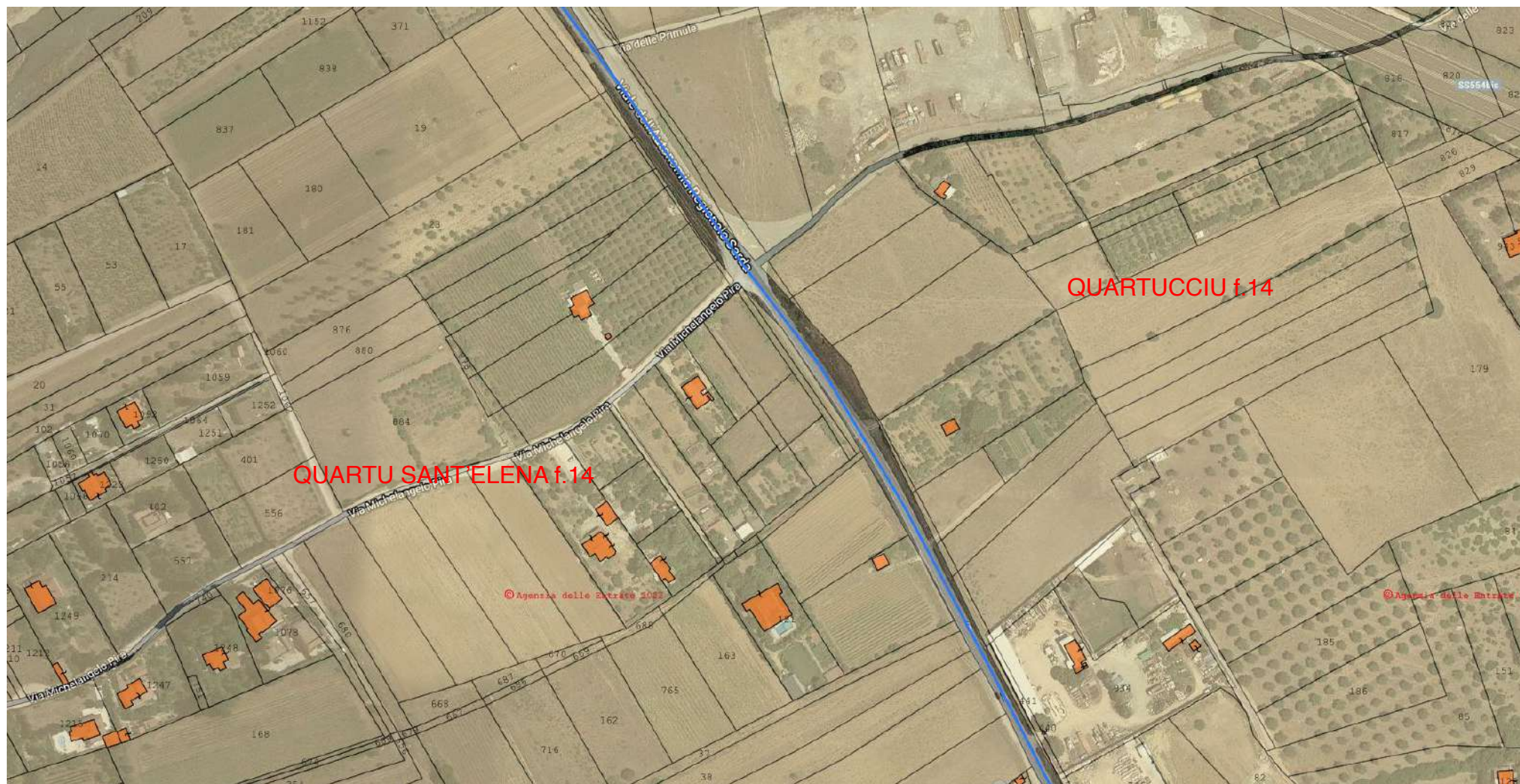
ELABORATO

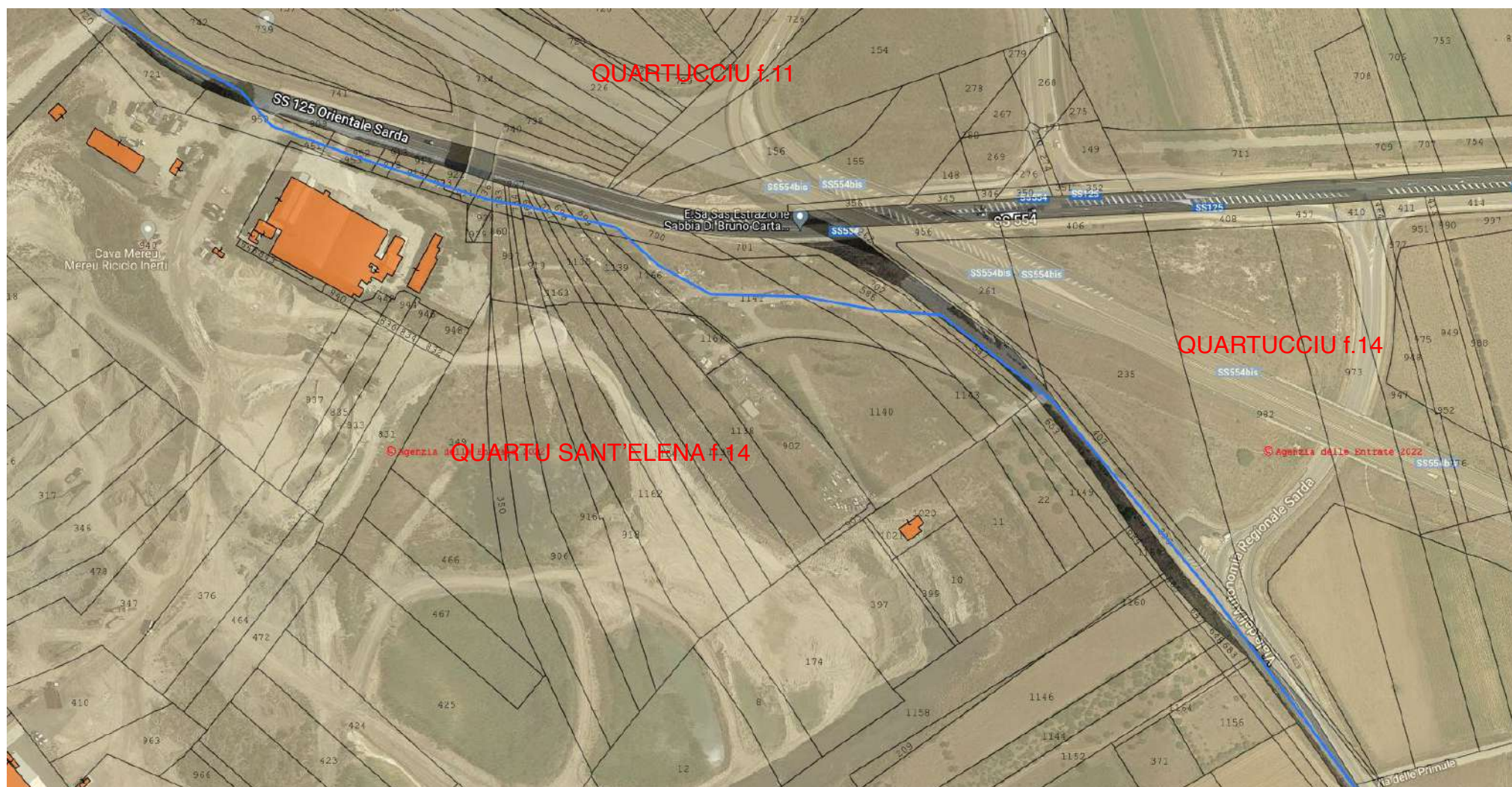
INDICAZIONE PERCORSO VIABILISTICO

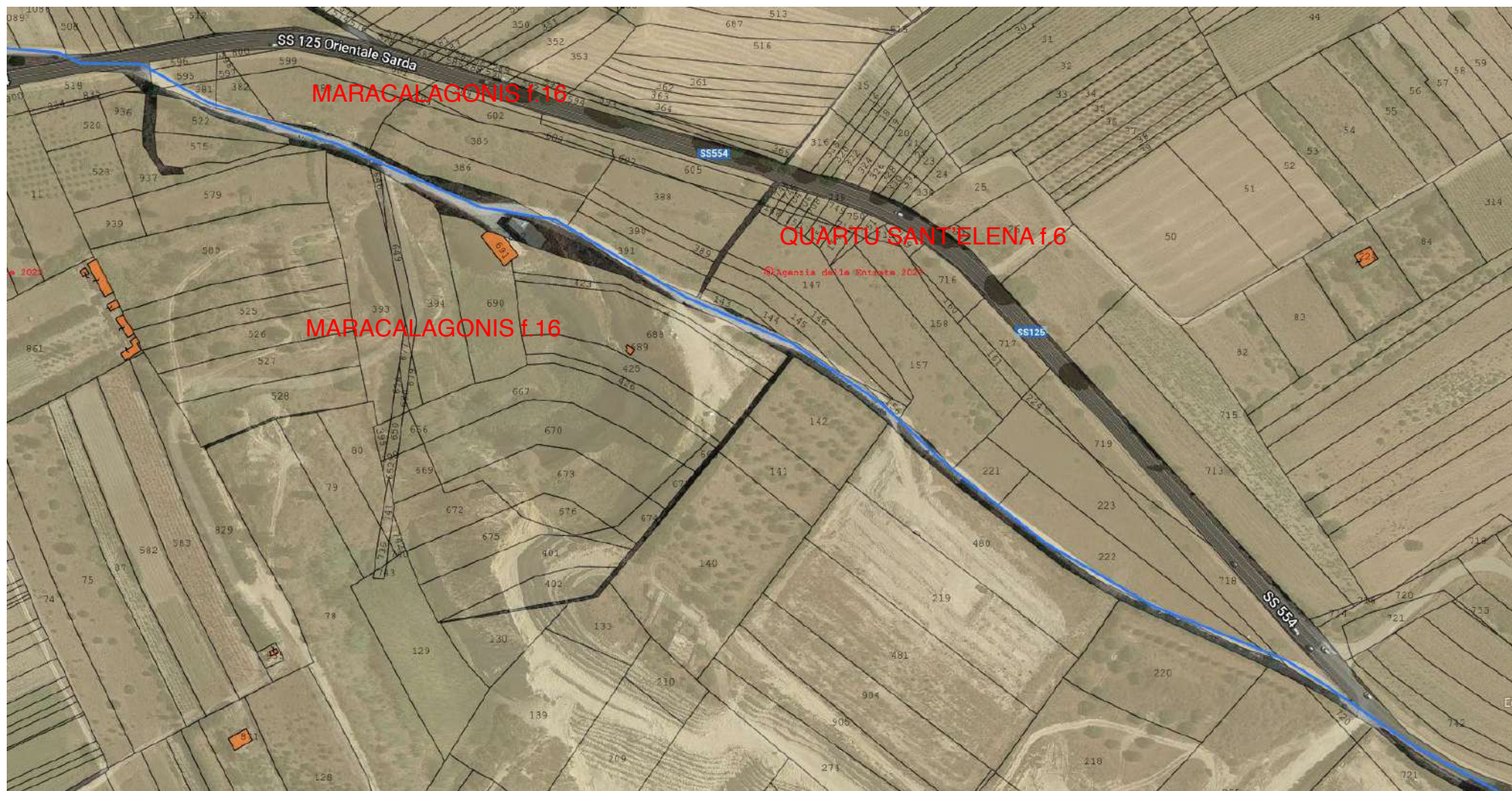
NUMERO ELABORATO
AV 12
SCALA:
DATA: FEBBRAIO 2022

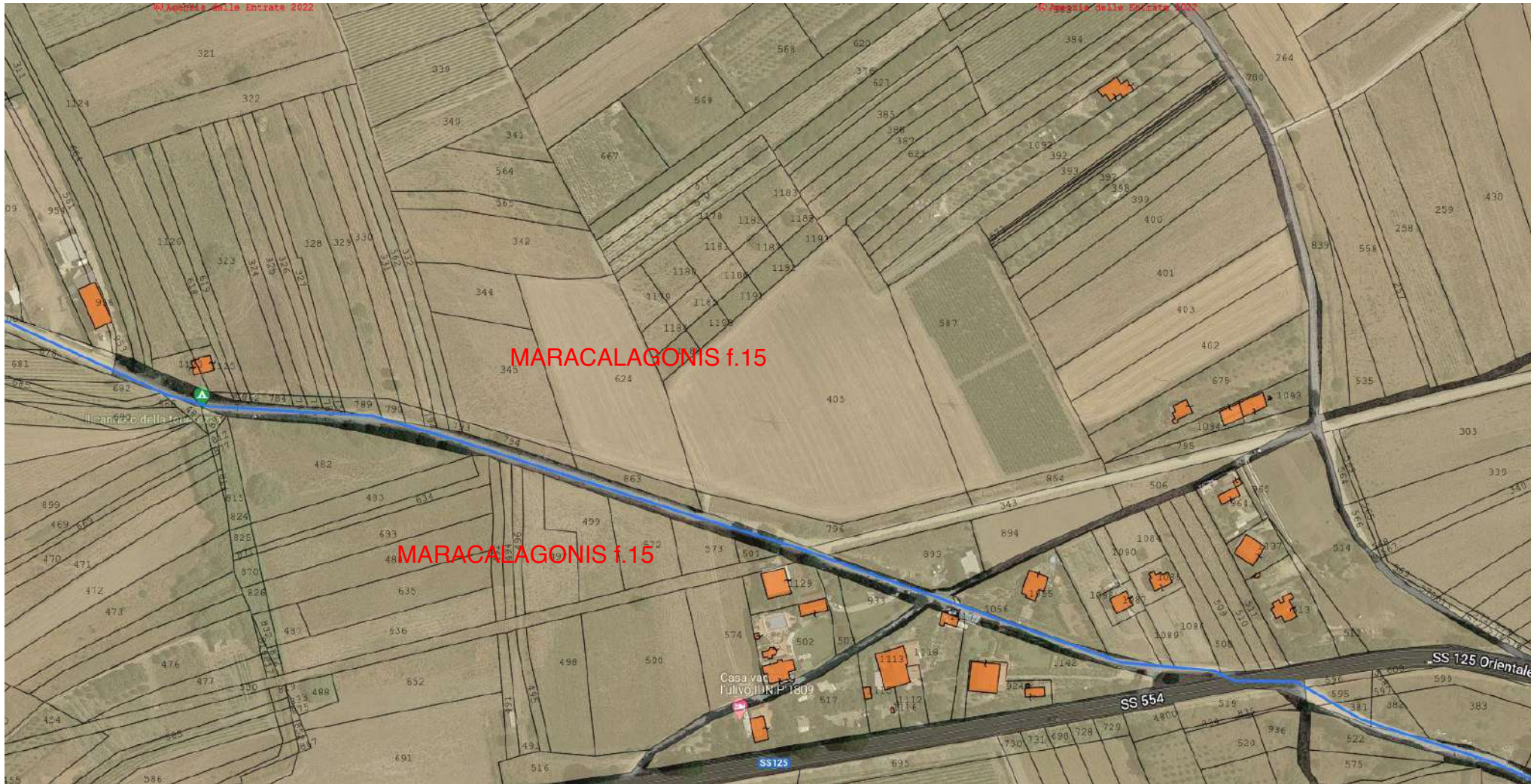
3	Terza emissione			
2	Seconda emissione			
1	Prima emissione	Arch. Chiara Maris	Arch. Valentina Madeddu	Ing. S. Floris
REV.	DATA	DESCRIZIONE	REDATTO	CONTROLLATO APPROVATO
CODICE COMMESSA		NOME FILE	FASE PROGETTUALE	CATEGORIA
STUDIO I ALCHIMISTI Ing. Stefano Floris Arch. Cinzia Neddu		PROGETTISTA - TIMBRO E FIRMA		PROGETTISTA - TIMBRO E FIRMA
COLLABORATORI: Arch. Chiara Madeddu Arch. Elena Porcu Ing. Corio Cassala Arch. Luigi Mercuri Geol. Mario Strenna Geom. Alberto Barraccu				

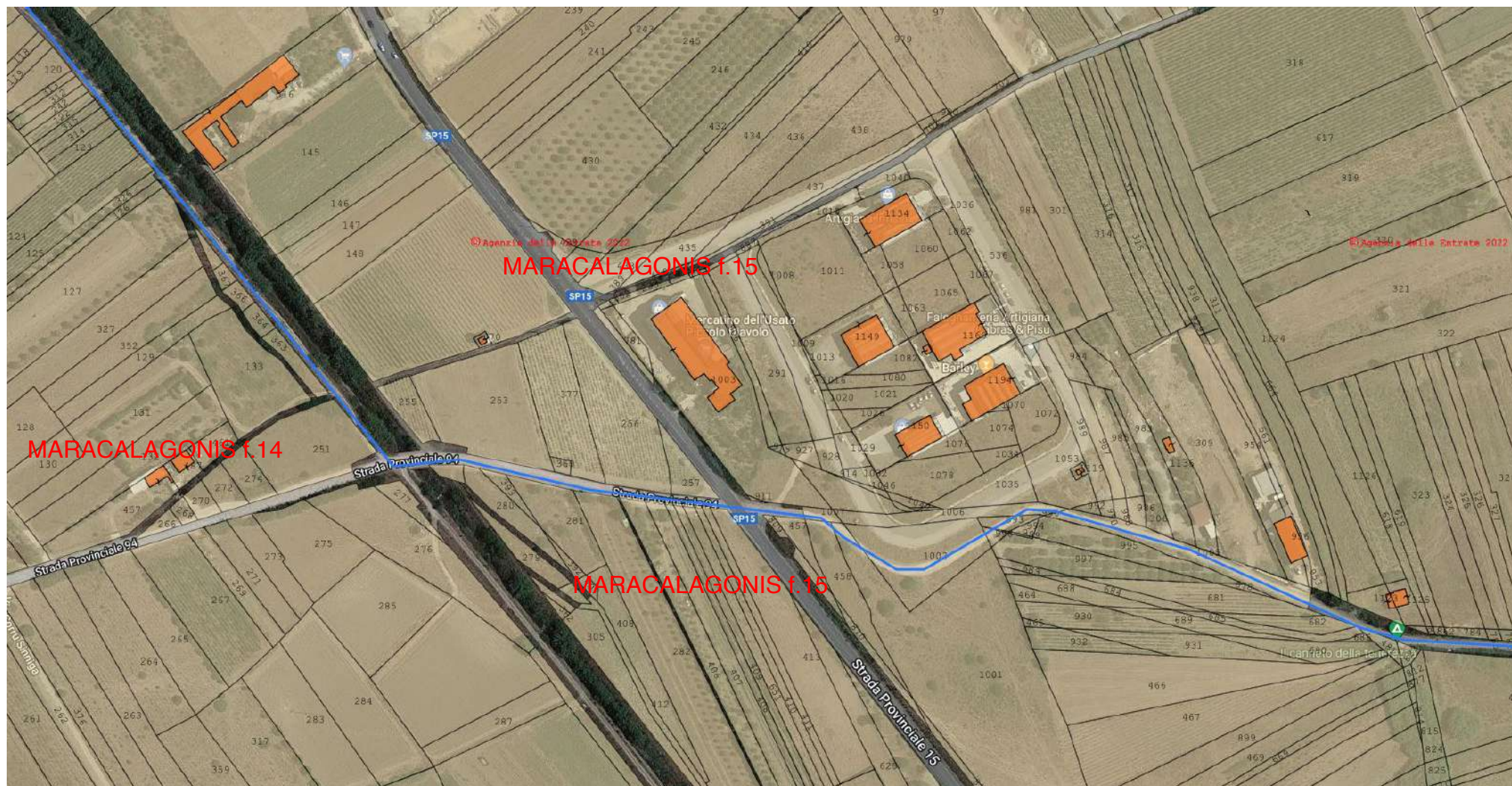


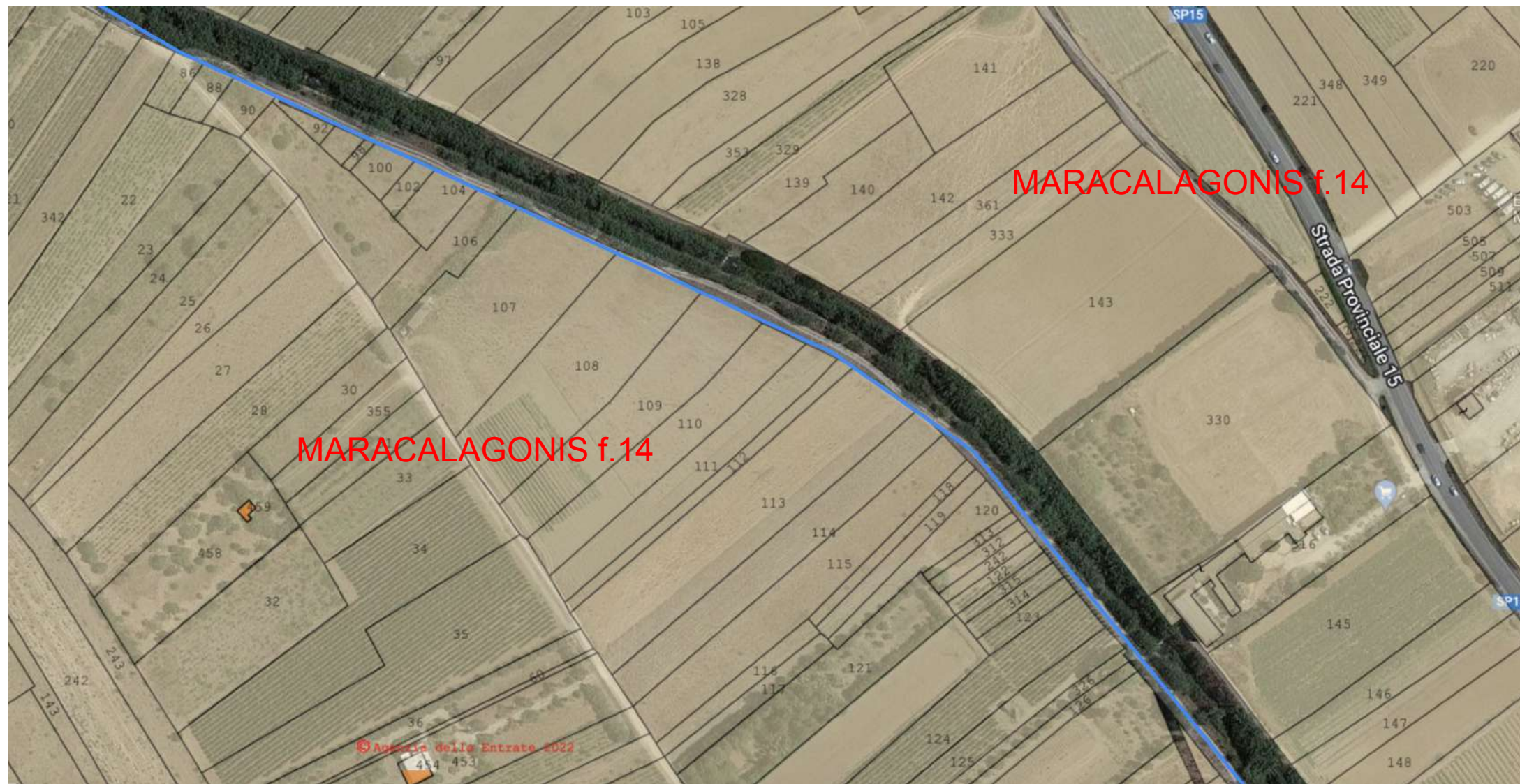


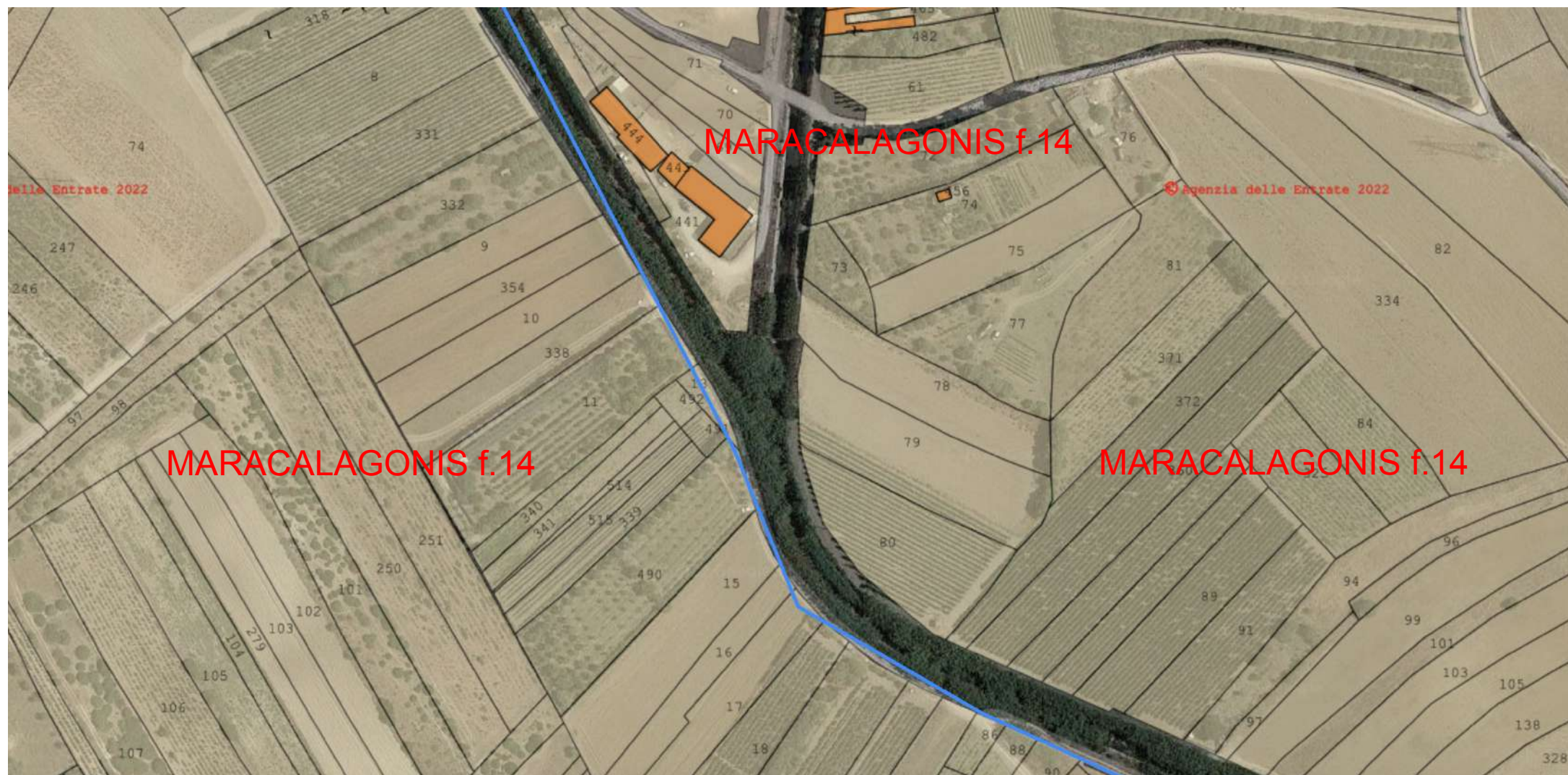










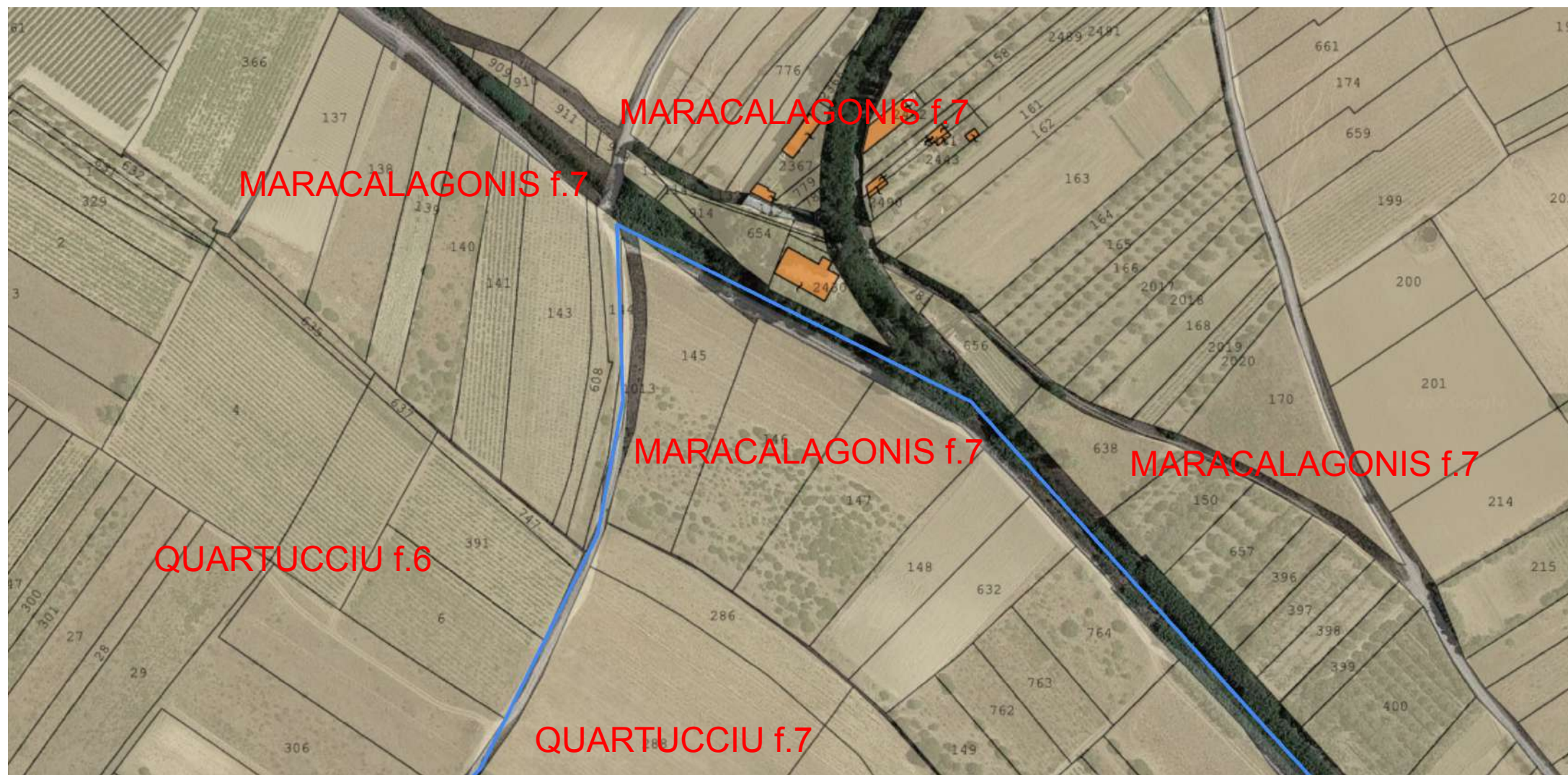


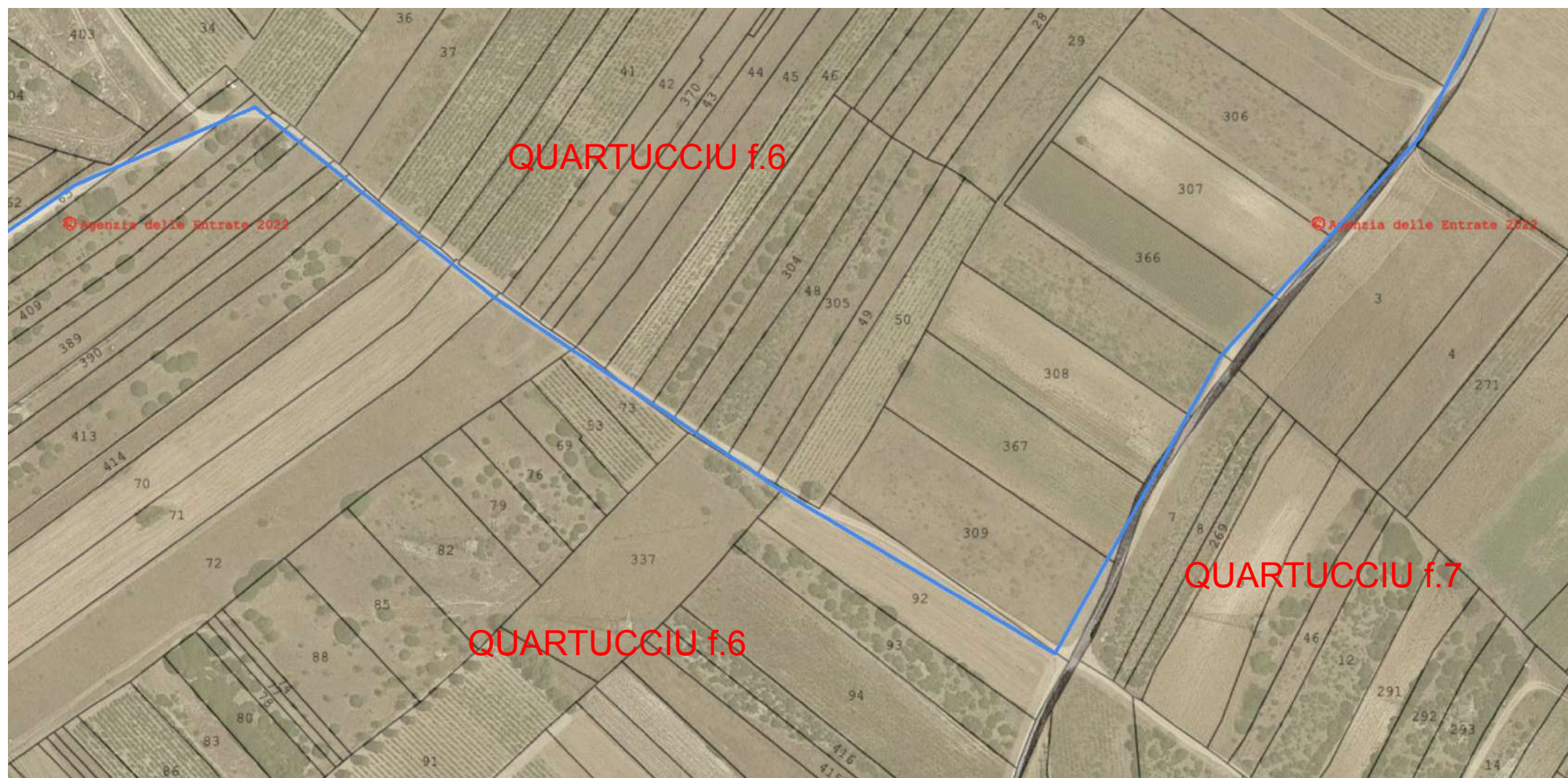


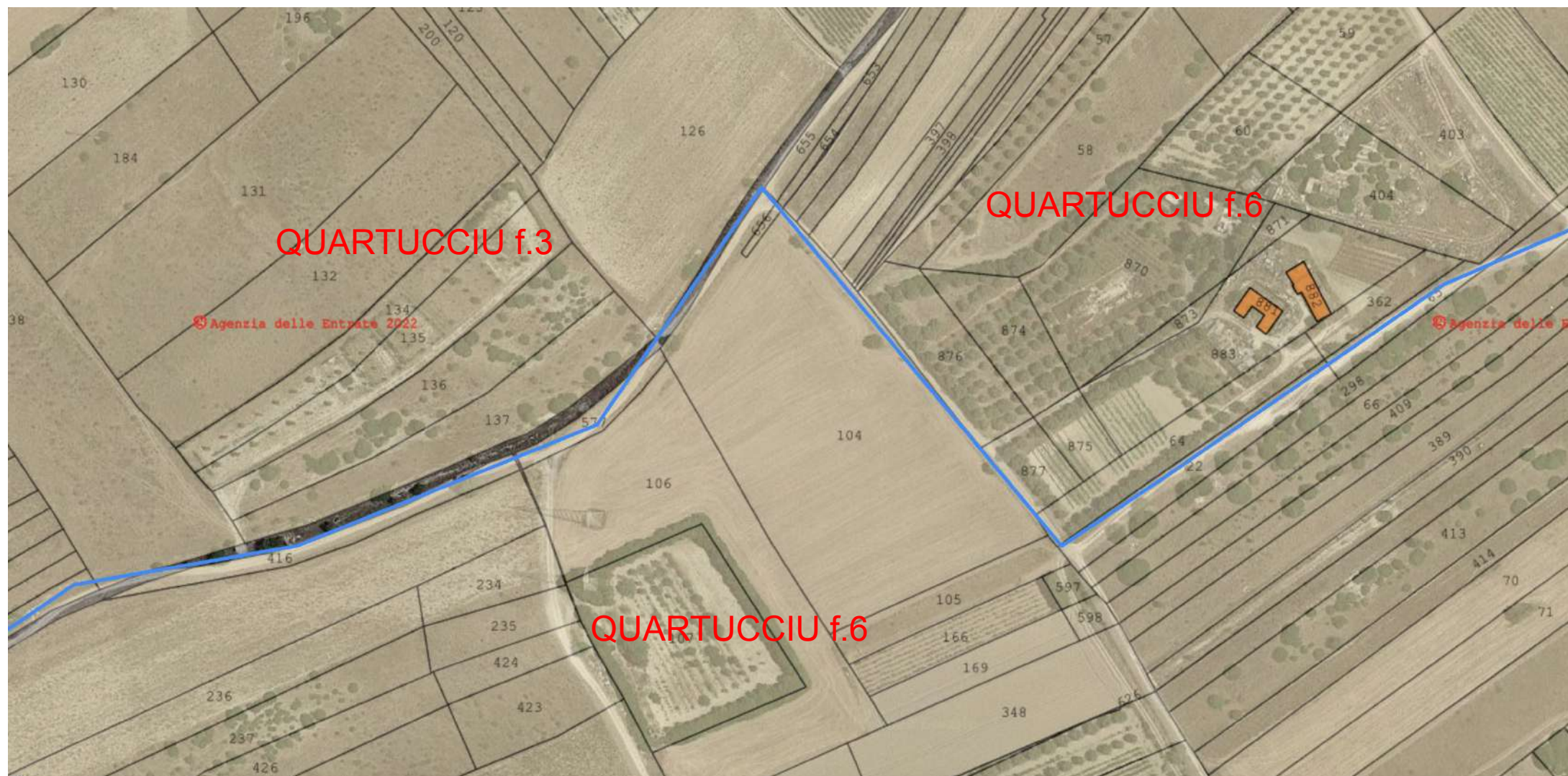
MARACALAGONIS f.7

MARACALAGONIS f.7

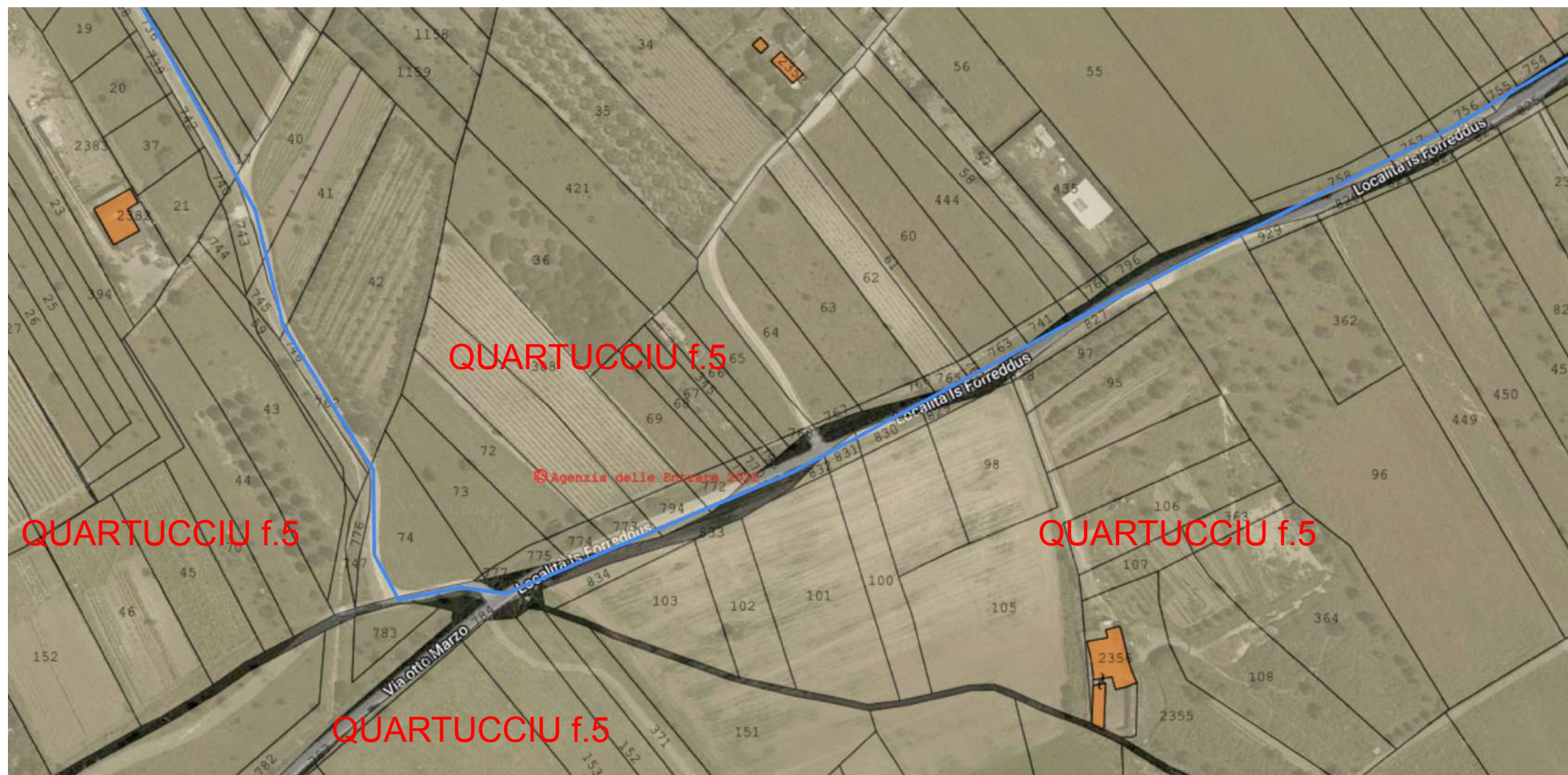


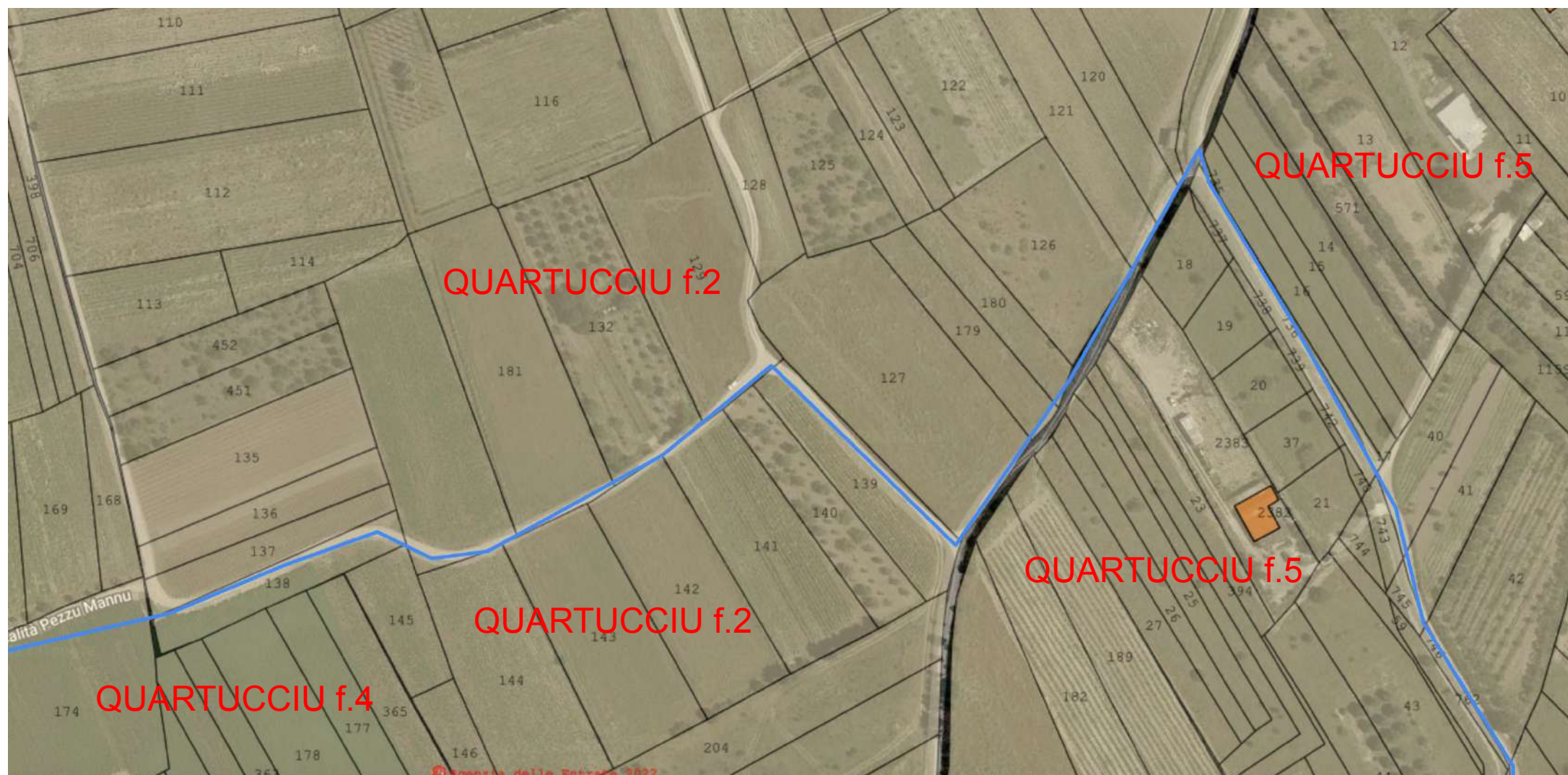


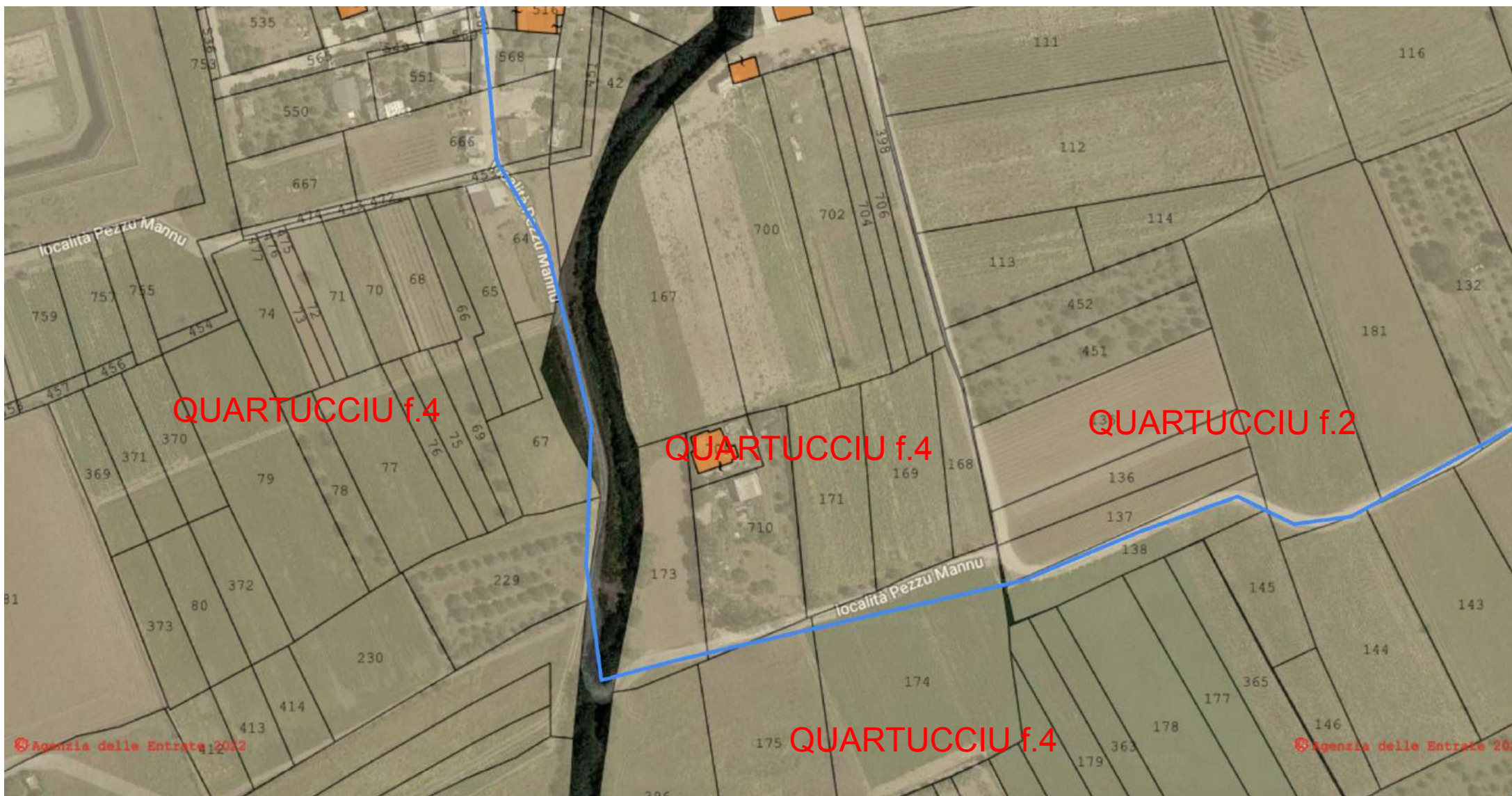


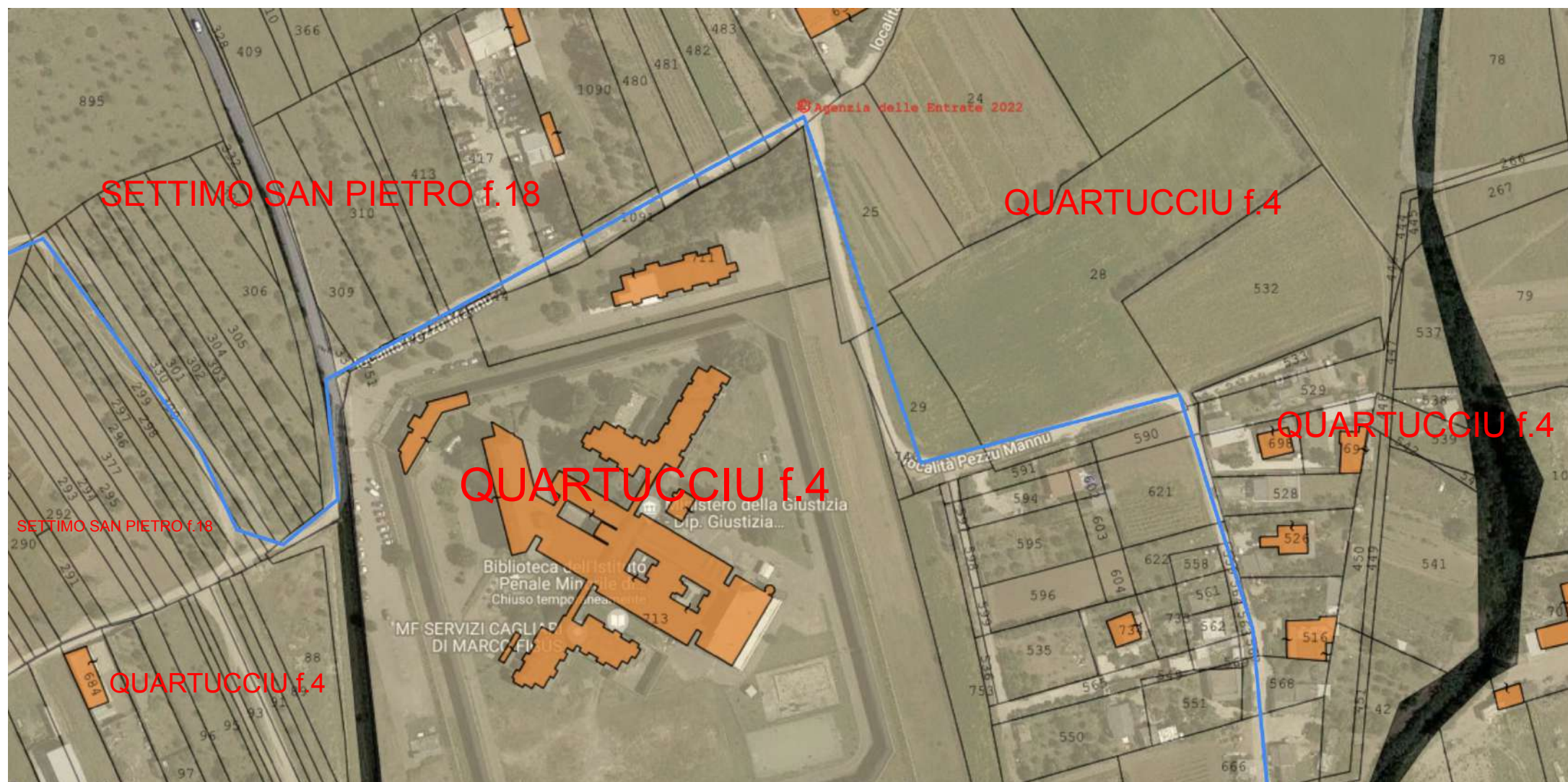




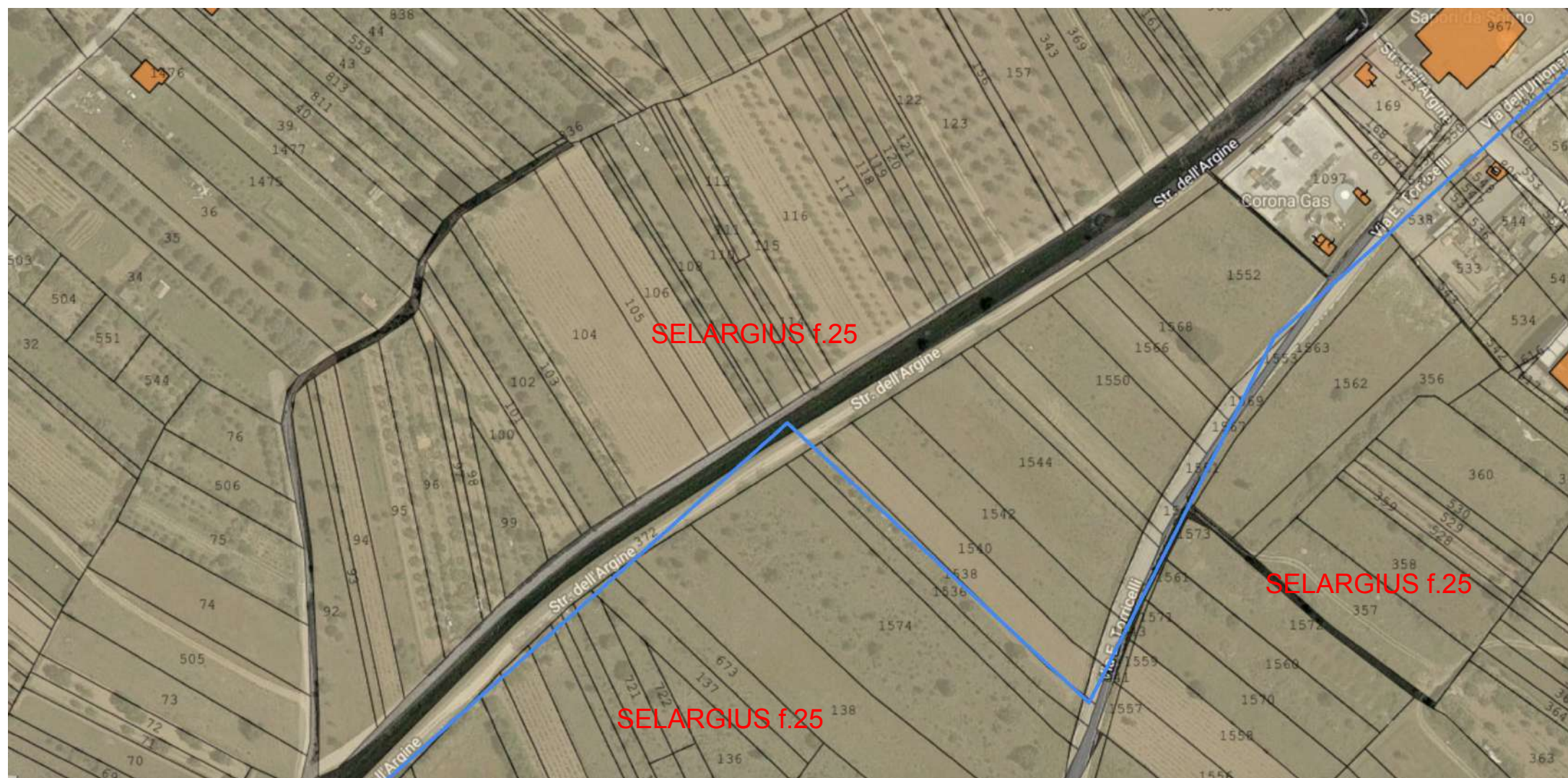


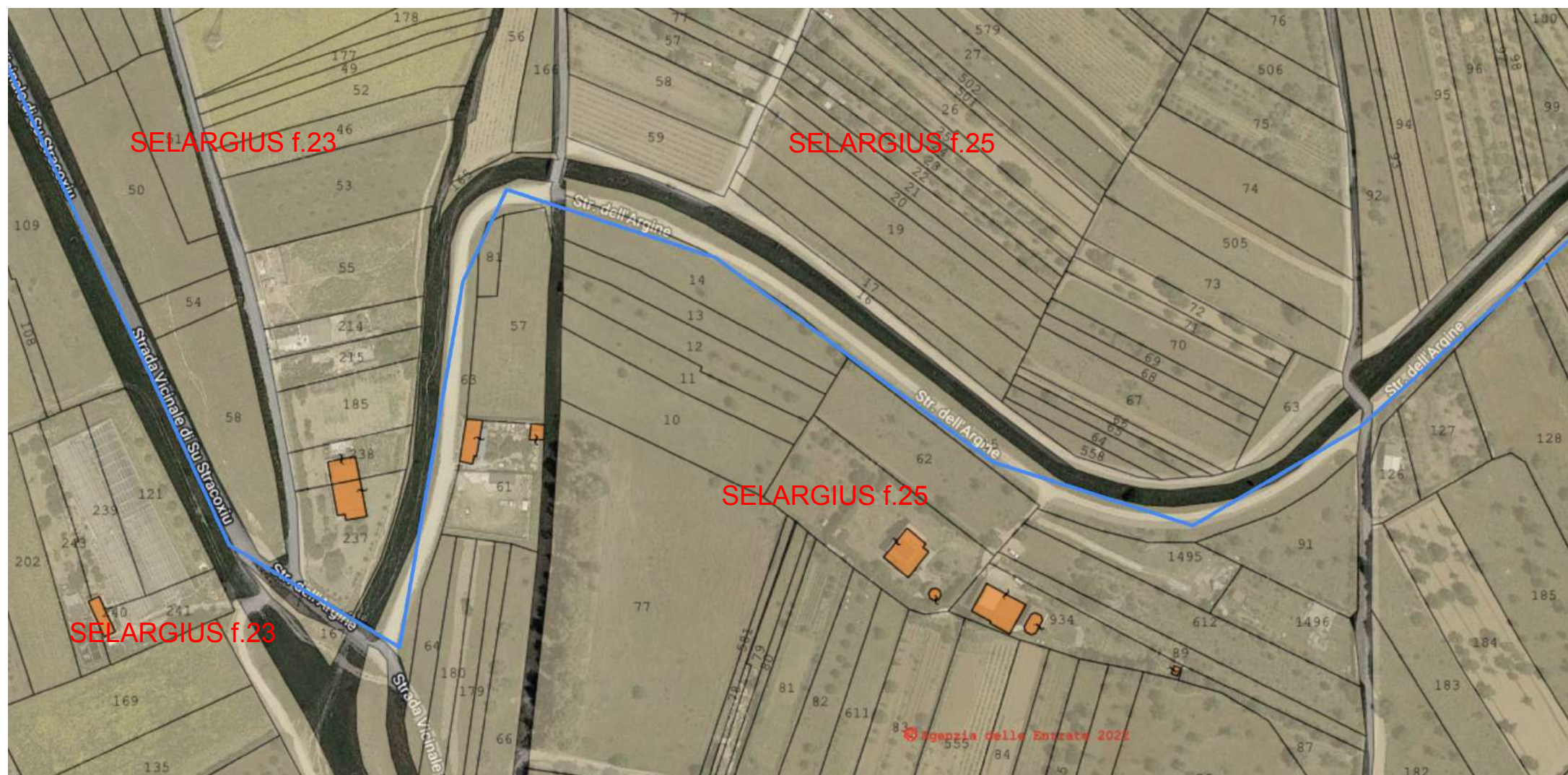








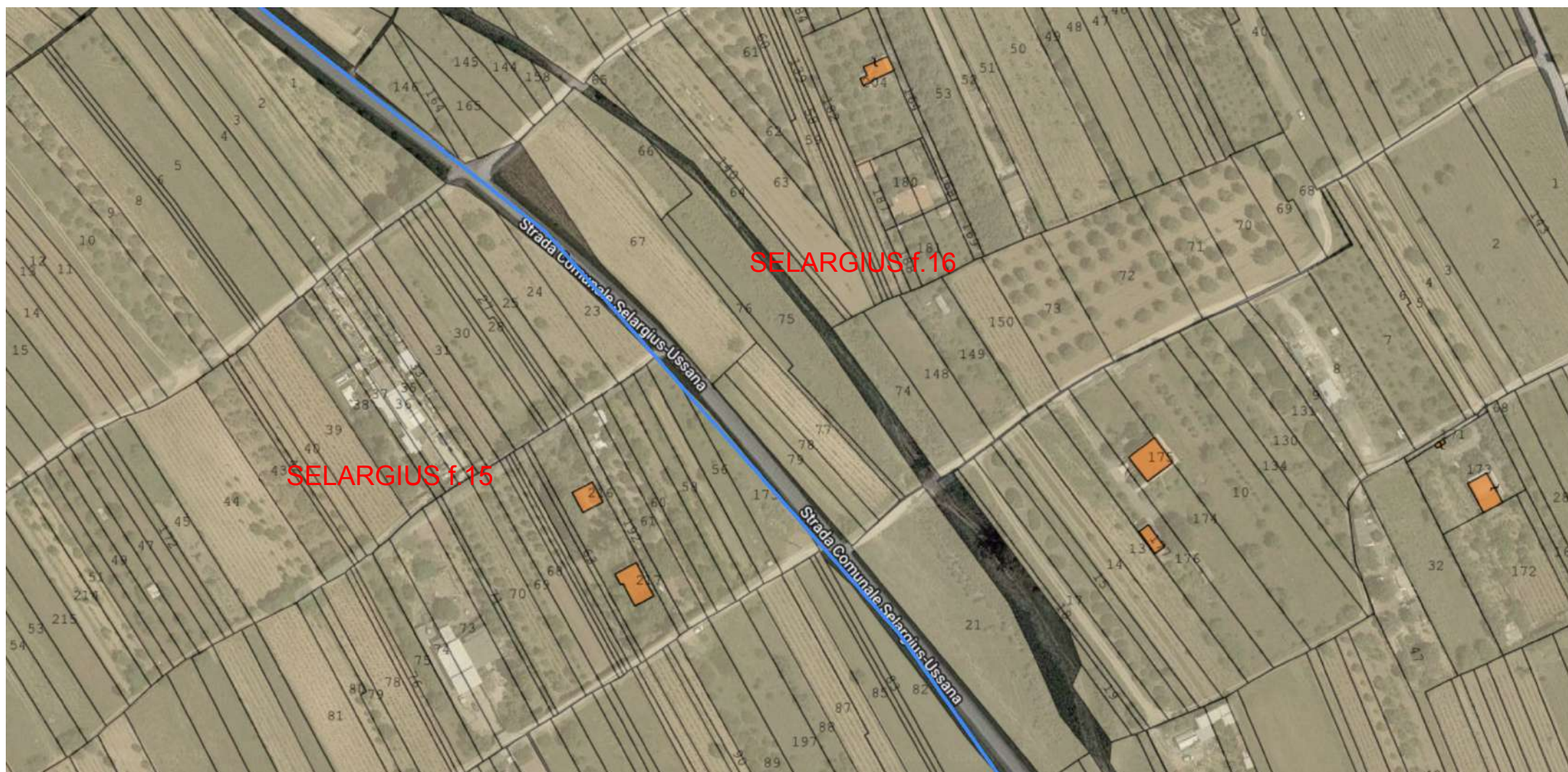












SELARGIUS f.16

SELARGIUS f.15







