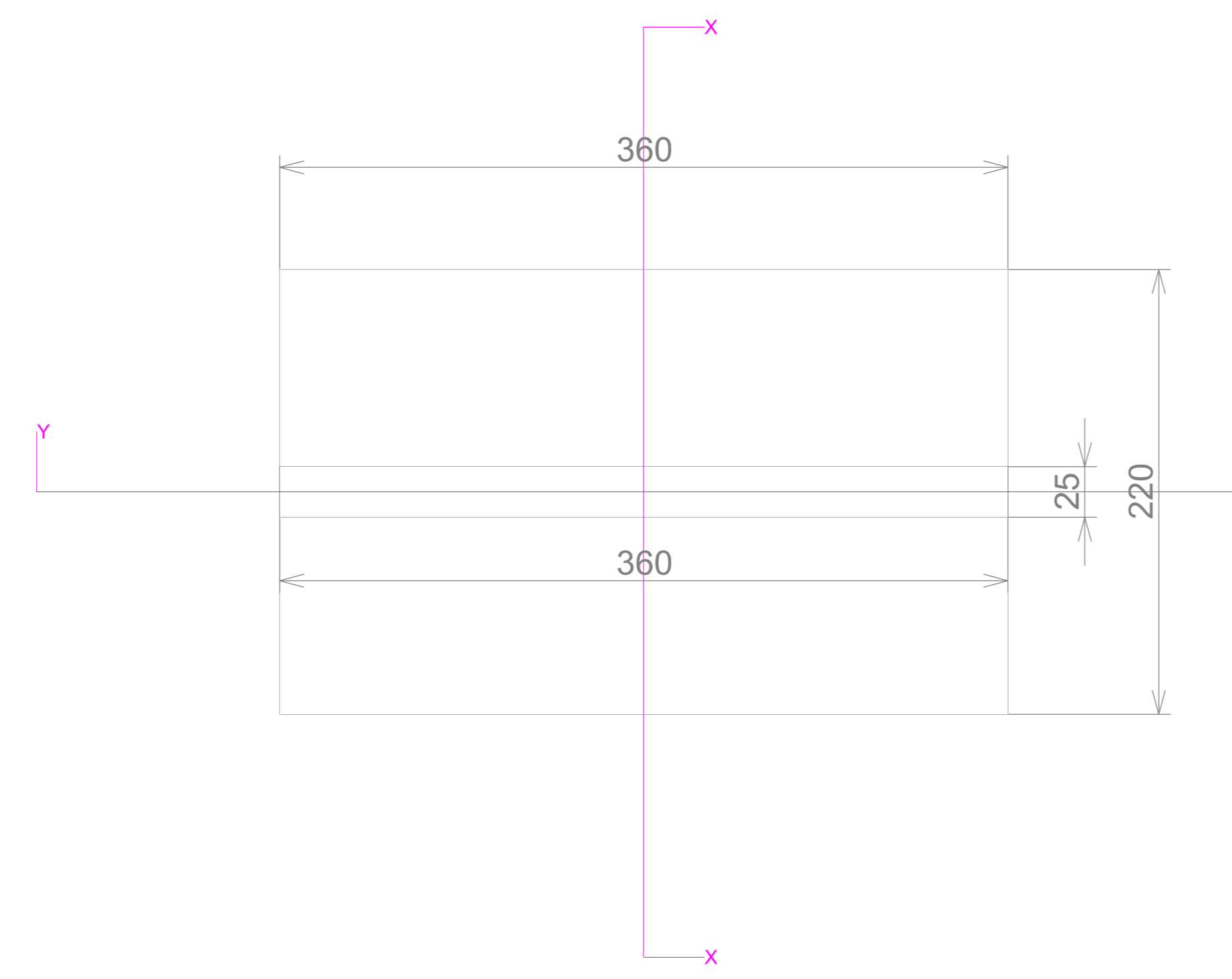
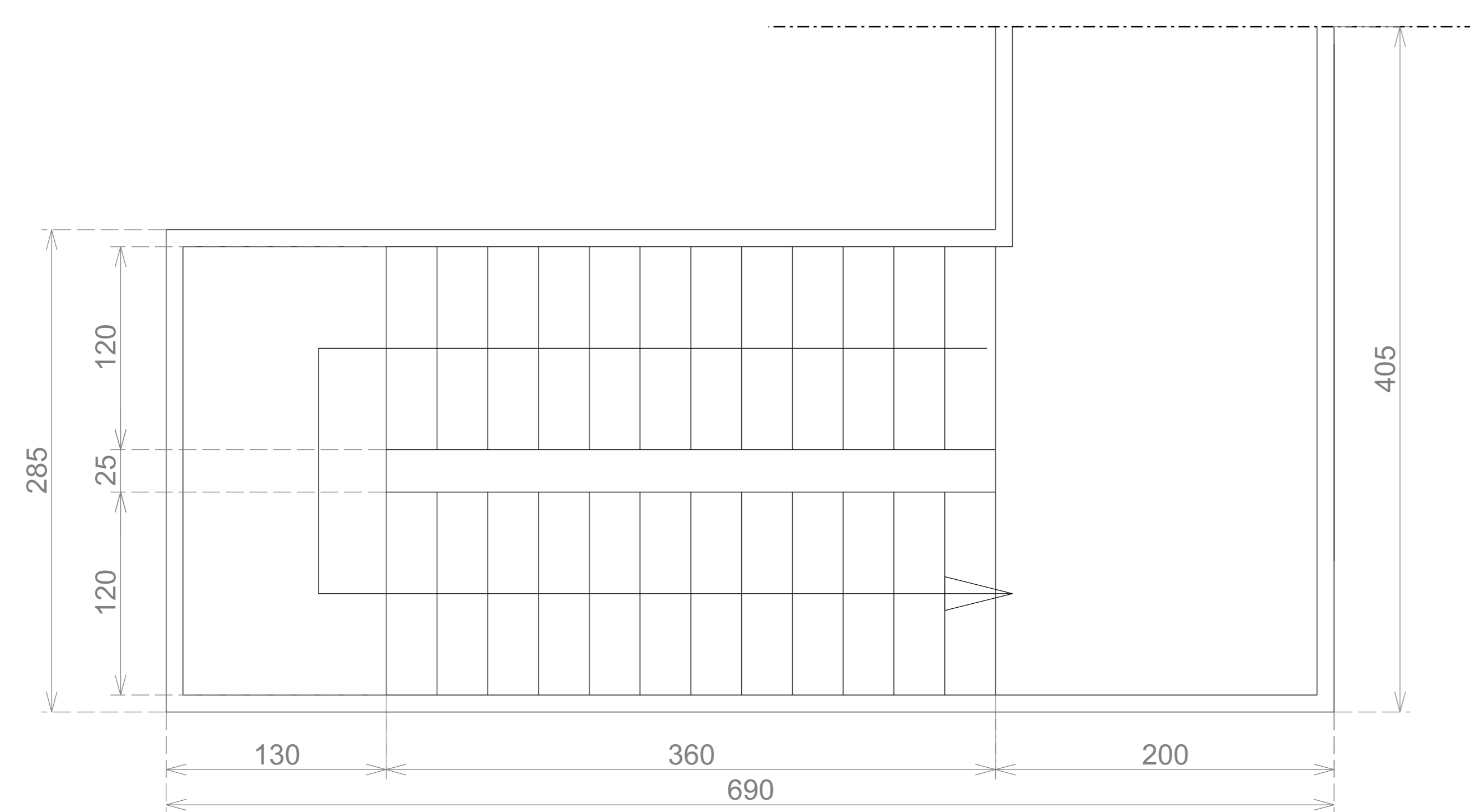
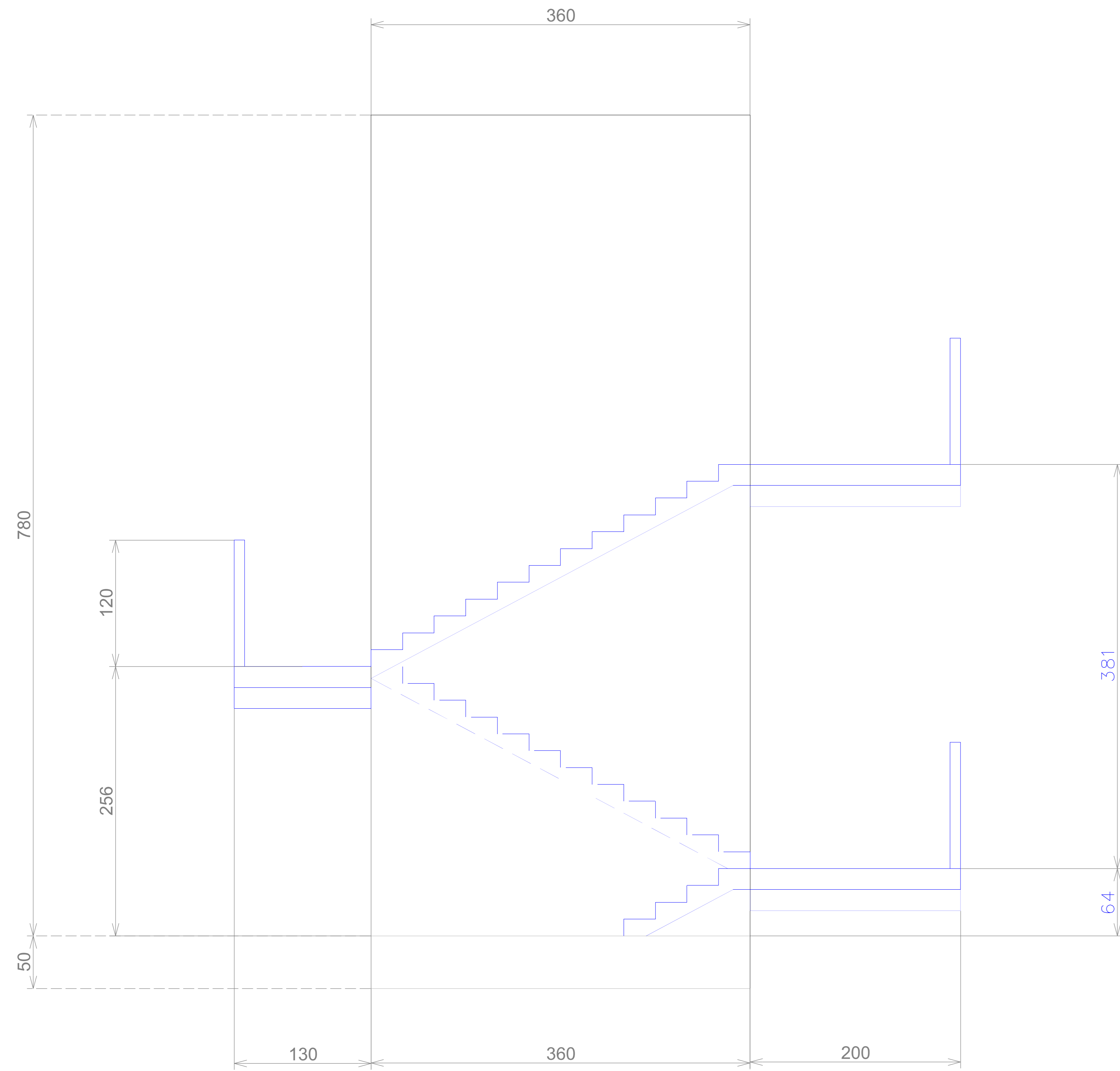
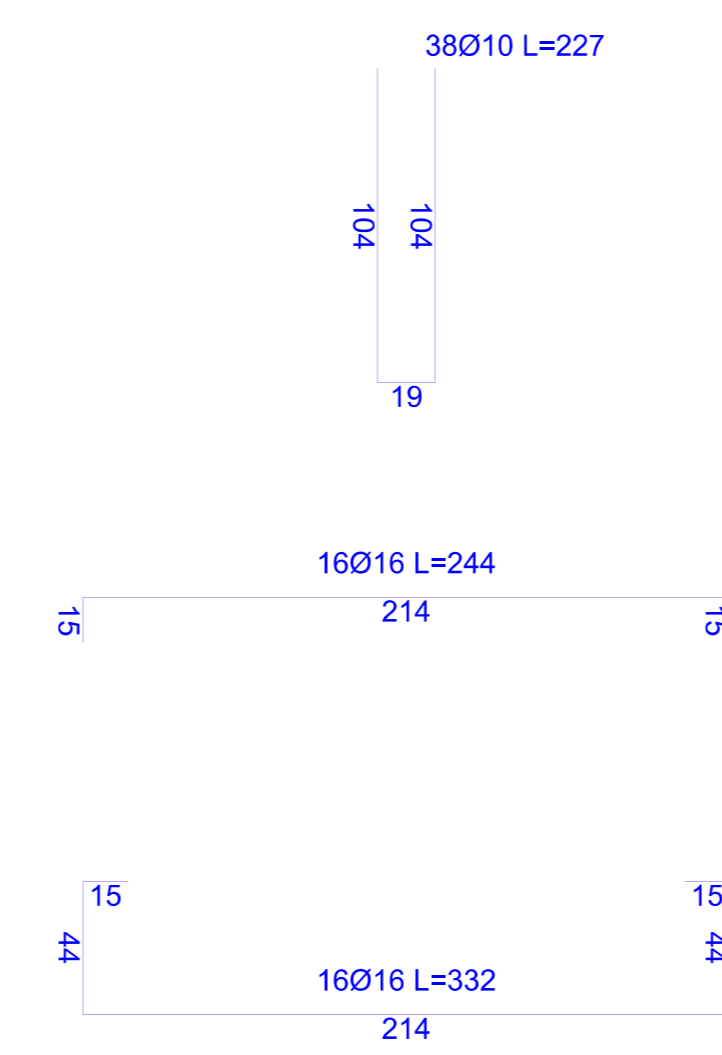
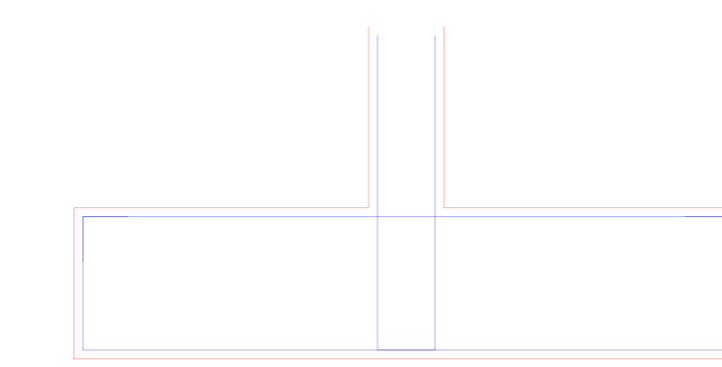


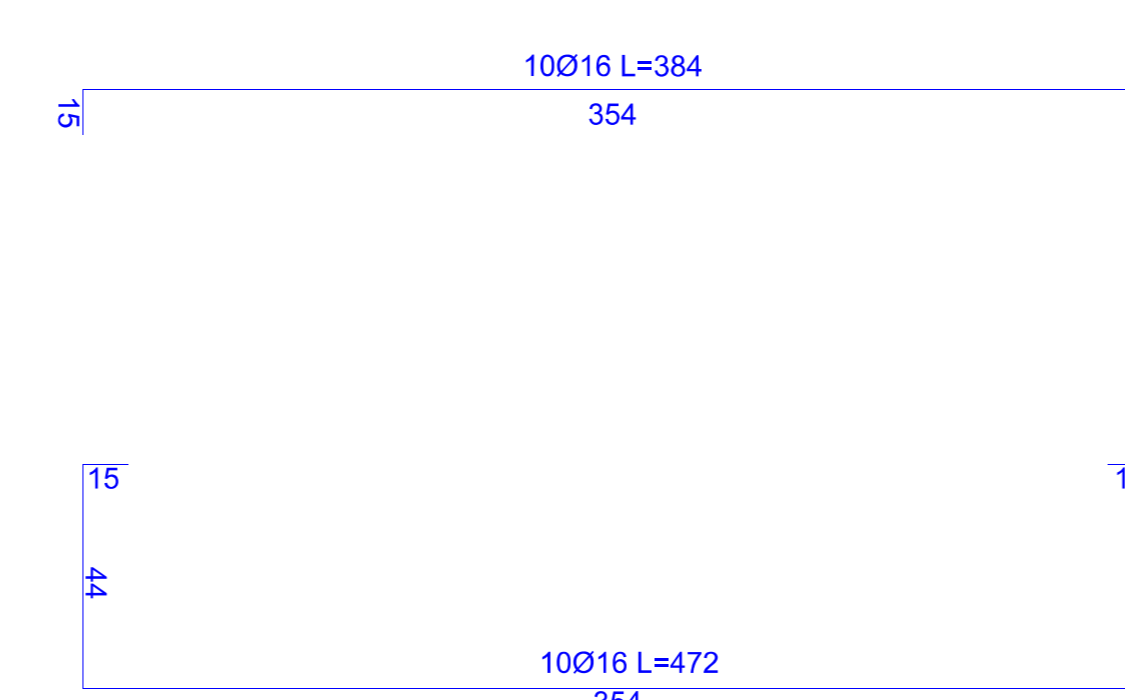
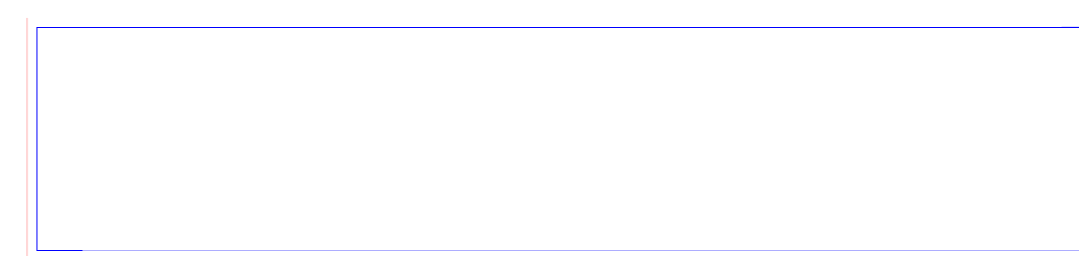
DIMENSIONI STRUTTURA



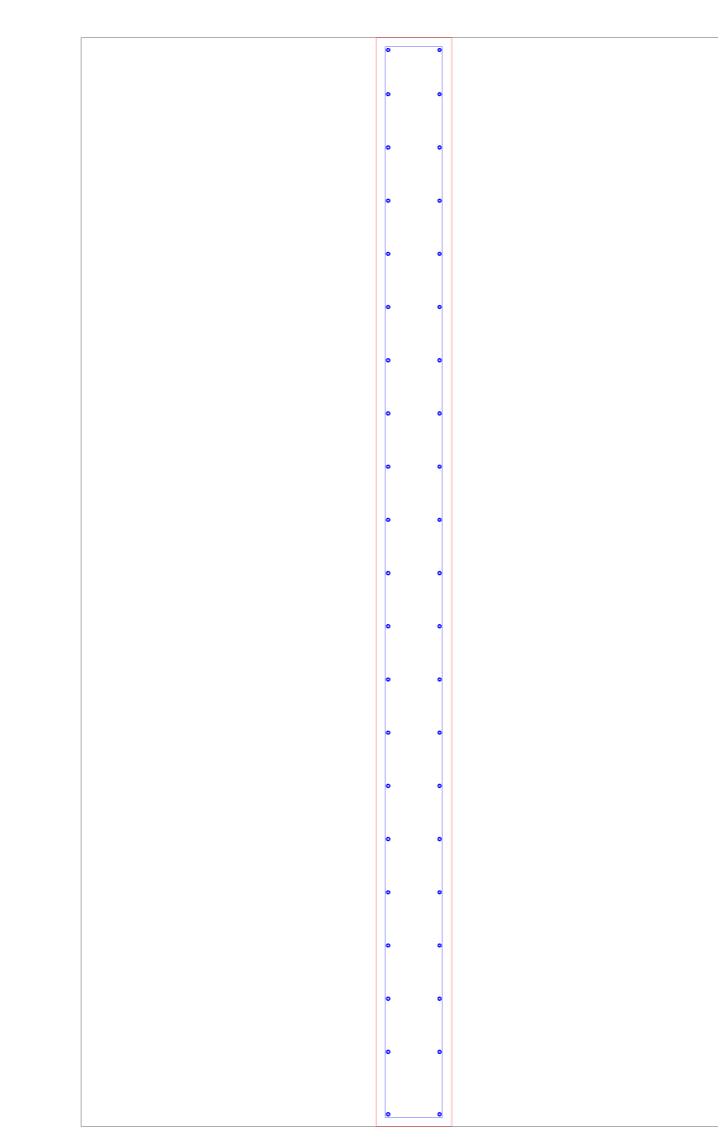
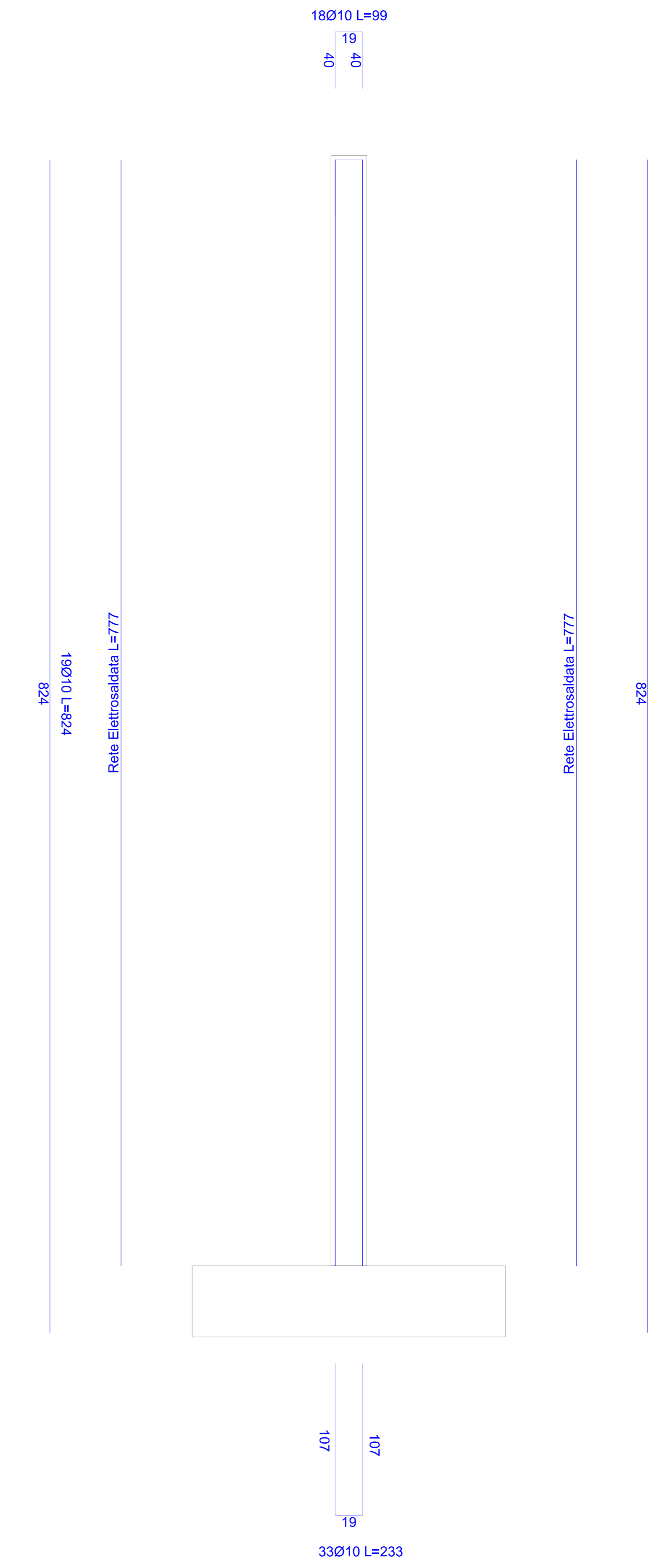
ARMATURA FONDAZIONE SEZIONE X-X



SEZIONE Y-Y



ARMATURA PARETE



COMUNE DI SELARGIUS

Città Metropolitana di Cagliari

Lavori di adeguamento alle norme di sicurezza della scuola elementare di via Roma



Progetto definitivo-esecutivo
Febbraio 2017

Scala 1:25 Tav. 5.1

Oggetto: Dettagli strutturali scala in c.a.

Progettazione: Arch. Maurizio Masala
Collaboratori:

Il Dirigente Area 6 - Lavori Pubblici
Ing. A. Pibiri
Il responsabile del procedimento
Ing. Nicola Concas